



Landscape-generative practices as resilience building devices?

Insights from 3 European case studies

Irene Bianchi, PhD
Grazia Concilio, PhD

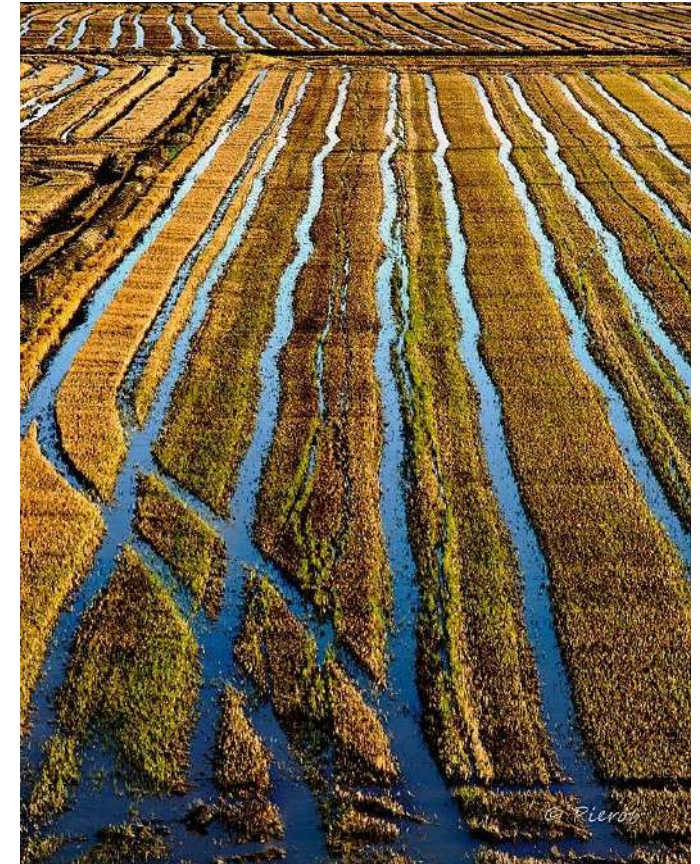
LODZ, July 2023
AESOP 23 Conference | Integrated Planning in The World of Turbulence

 Cities in Action
for Learning Lab

 **POLITECNICO**
MILANO 1863

DIPARTIMENTO DI
ARCHITETTURA E STUDI URBANI

 **PALIMPSEST**



can be conceived as **living and dynamic manifestations of stratified nature-human interactions** shaping territories



privileged foci for the observation of **misalignments, tensions and contradictions** in the equilibria between human activities and the physical and natural spheres shaping territories

in the evolution of landscapes epochal systemic changes
–linked to modes of production and management–
become **visible territories**

in the landscape that the **effects of** both
ecological crises and territorial dynamics related to
short-sighted policy and management choices **materialise**

they appear in the form of **increased vulnerability** to
climate risks or conflicts on the use of space and
resources



Creative Drivers for Sustainable living heritage landscapes

New European Bauhaus Project
HORIZON-CL2-2022-HERITAGE-01 – Shaping a greener and fairer way of life in creative and inclusive societies through Architecture, Design and Arts

3yrs: Started in March 23

...derives from an Ancient Greek term (παλίμψηστος that means 'again' + 'scrape'), and describes the process of the original writing practices over papyrus: existing text was scraped and washed off, the surface re-smoothed, and the new literary material written on the saved material.

In line with reflections emerged across disciplinary fields (Corboz, 1983), PALIMPSEST adopts this re-writing perspective to look at how landscapes are constantly re-shaped through multiple forces



landscapes as text and papyrus

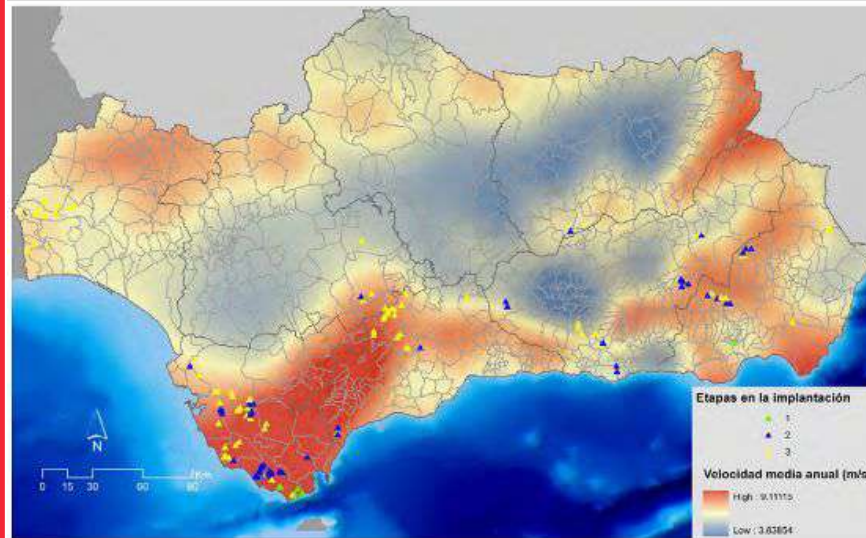
arts, design and architecture as
enablers to re-writing practices

sustainability transition as a
direction

3 | PALIMPSEST PILOTS

Jerez de la Frontera

Renewable romería: a common path for sustainable agricultural uses and energy transition landscapes



3 | PALIMPSEST PILOTS

Lodz

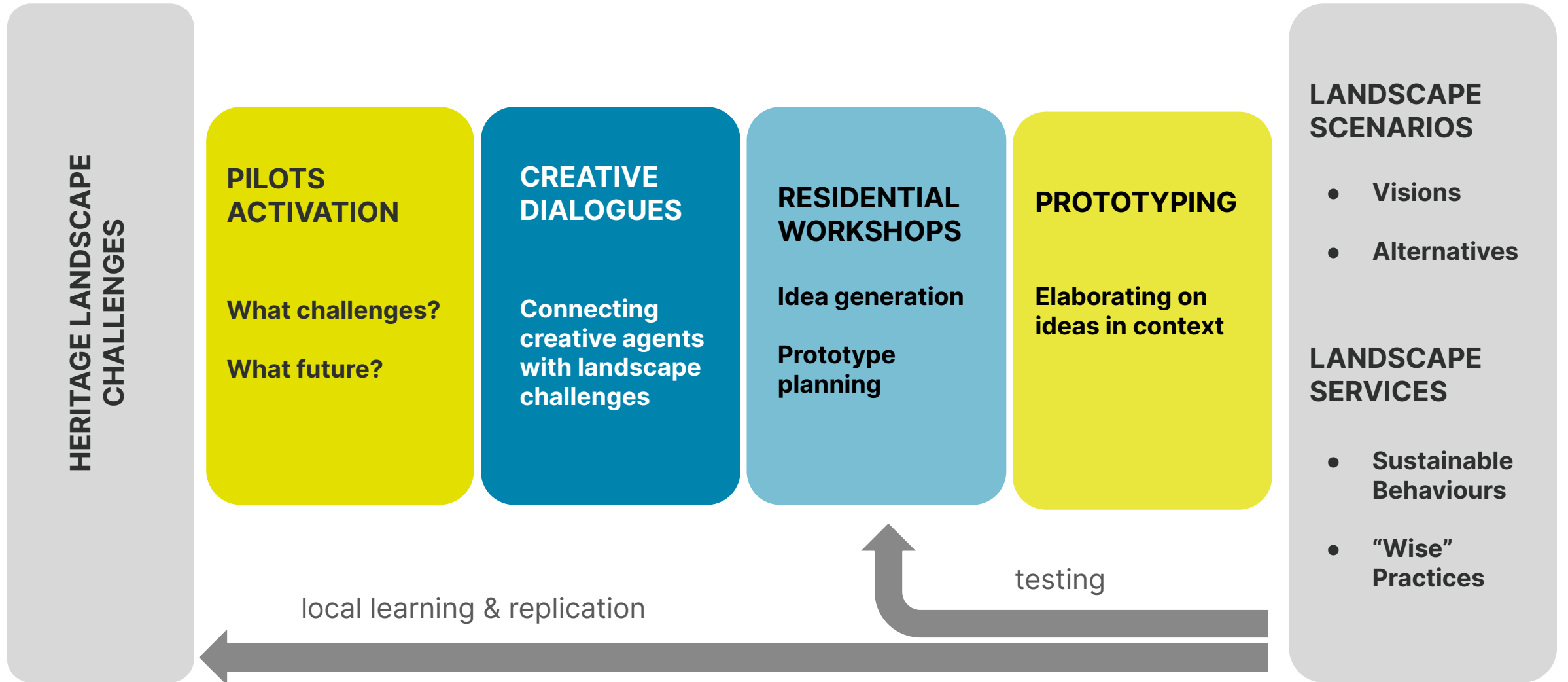
Regenerating textile industrial area by dealing with water and air pollution

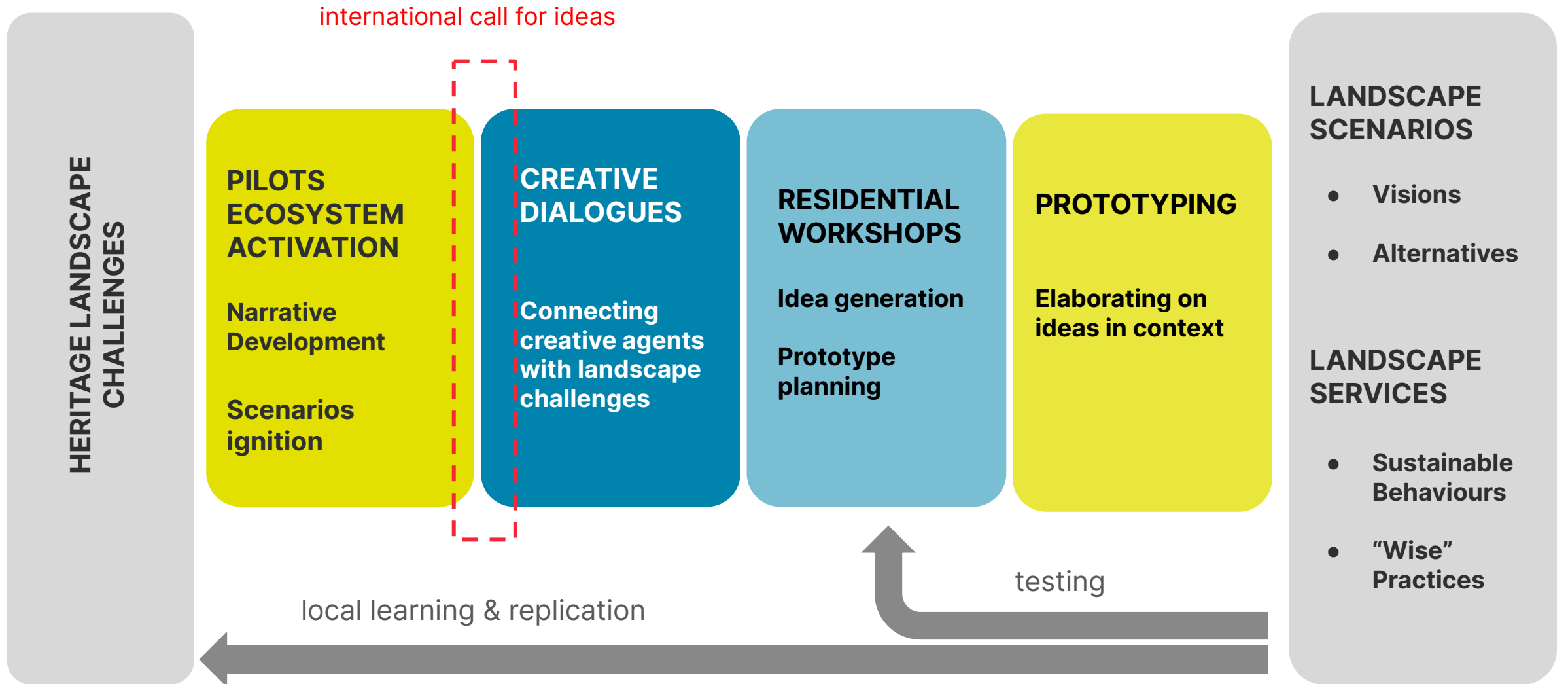


Milan

Reconnecting with the (in)visible: expansions, retractions and interactions between the Milanese waters and the Lambro River Landscape







the multilevel nature of **practices transformation**

the **added value of creativity** when dealing with technical/scientific topics and debates

a better understanding (making the “hidden” visible) of the **critical pathway to sustainability transition**



CA Cities in Action
for Learning Lab



POLITECNICO
MILANO 1863

DIPARTIMENTO DI
ARCHITETTURA E STUDI URBANI



PALIMPSEST

more info:

www.palimpsest-project.eu/

irene.bianchi@polimi.it,
grazia.concilio@polimi.it